

# 112 年度行專訴字第 21 號附圖

## 附圖一：

圖 1 是較佳實施例的立體外觀圖

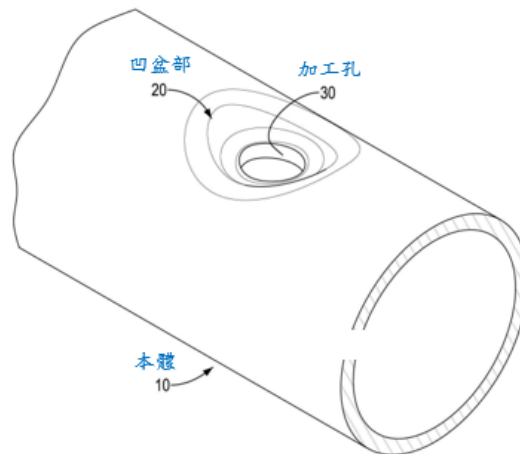


圖 3 是較佳實施例的側視剖面圖

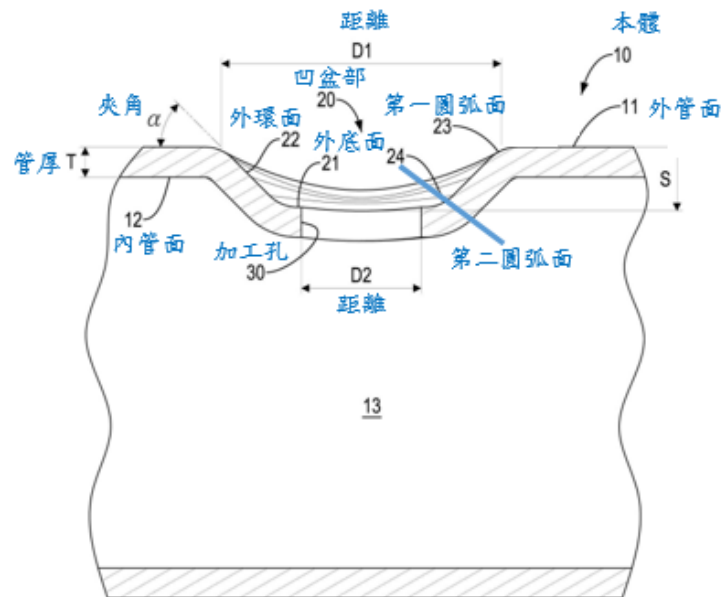


圖 4 是較佳實施例的端視剖面圖

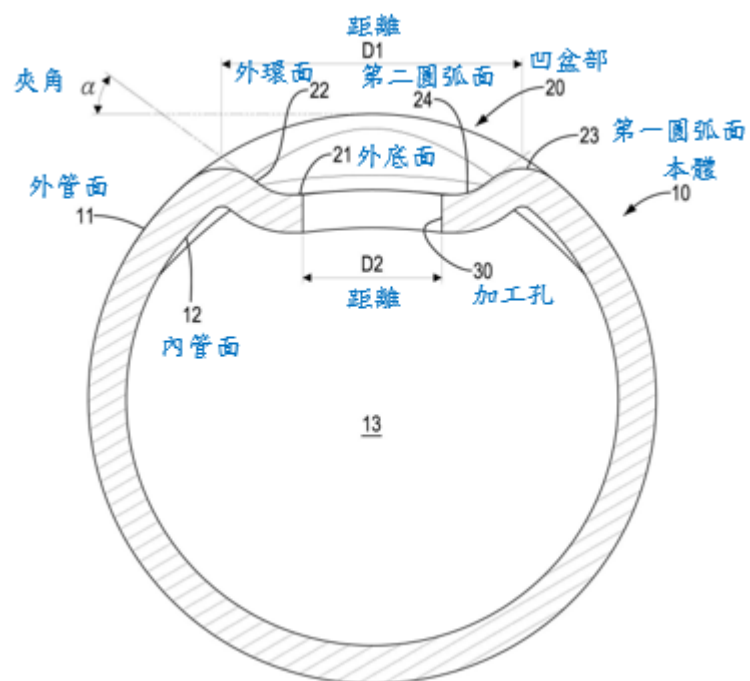


圖 5 是另一較佳實施例的側視剖面圖

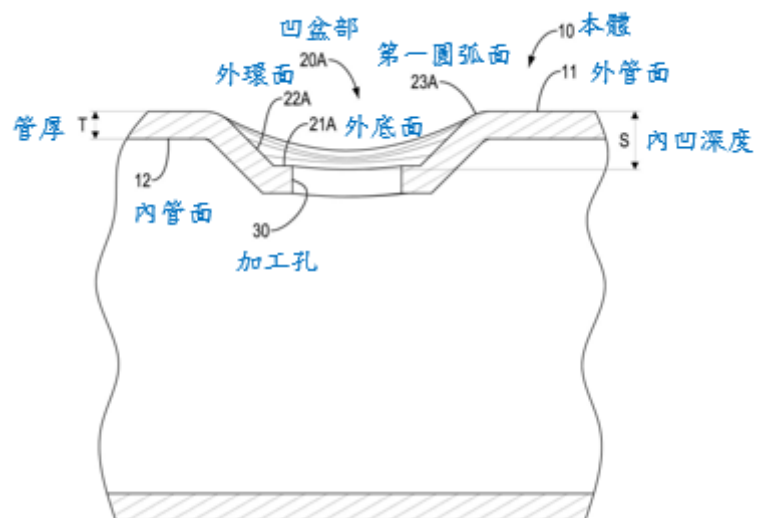
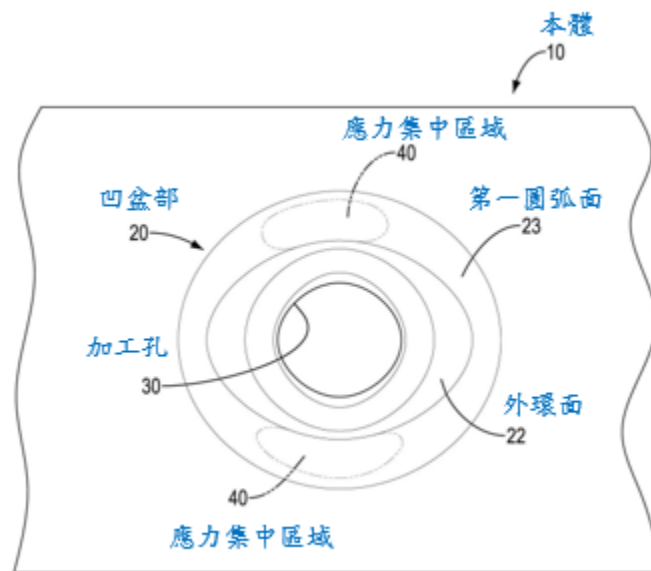
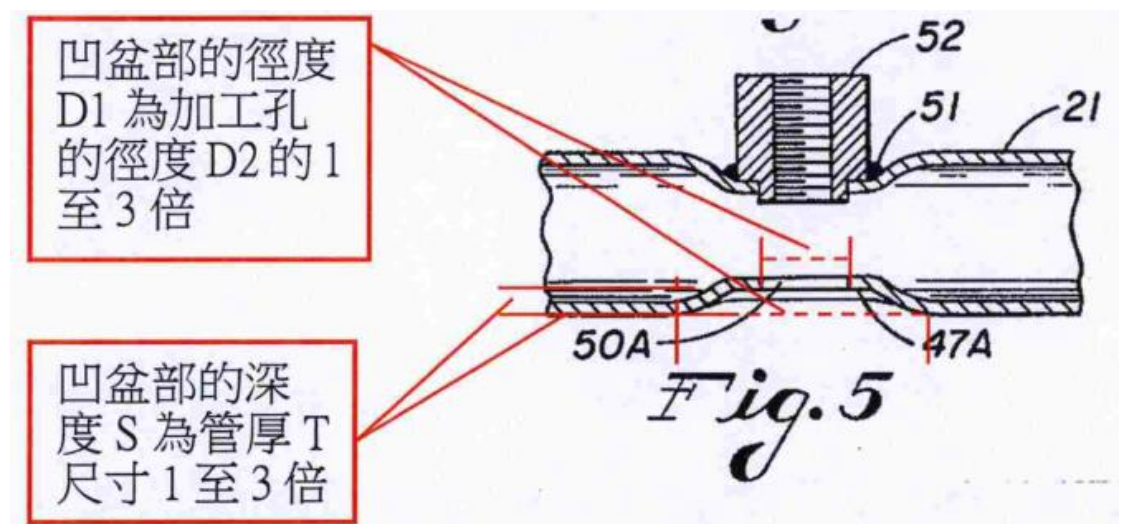
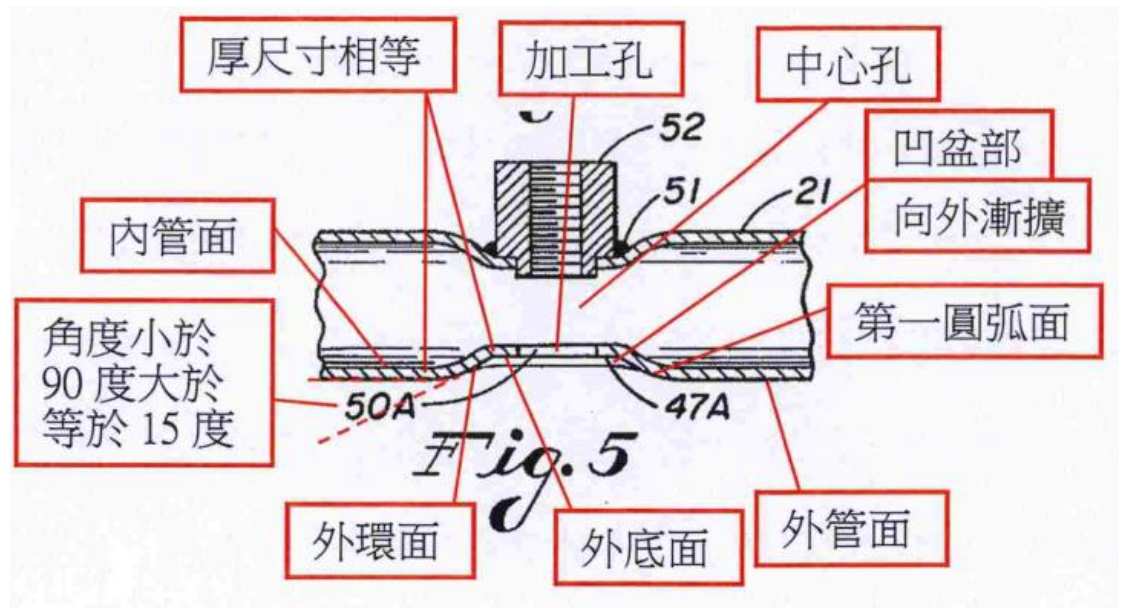
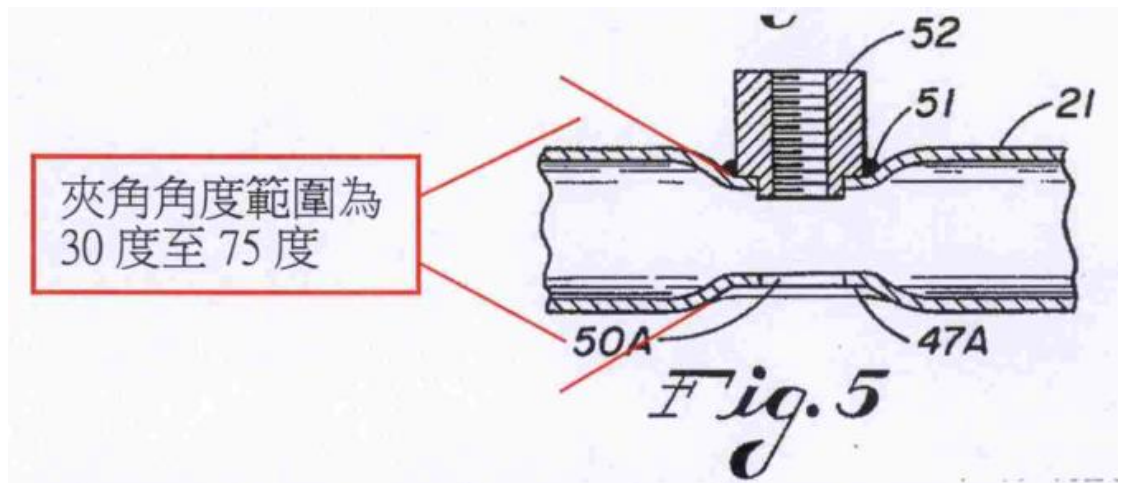
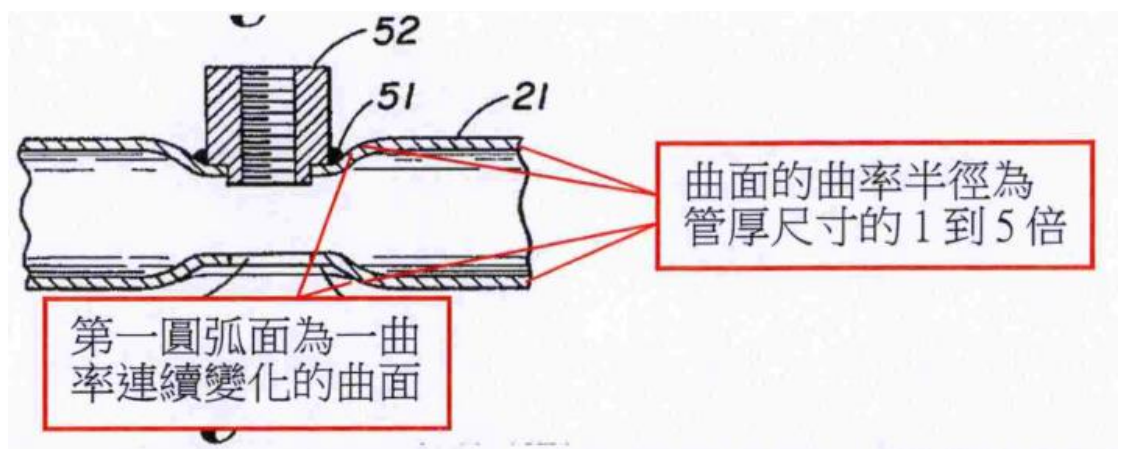
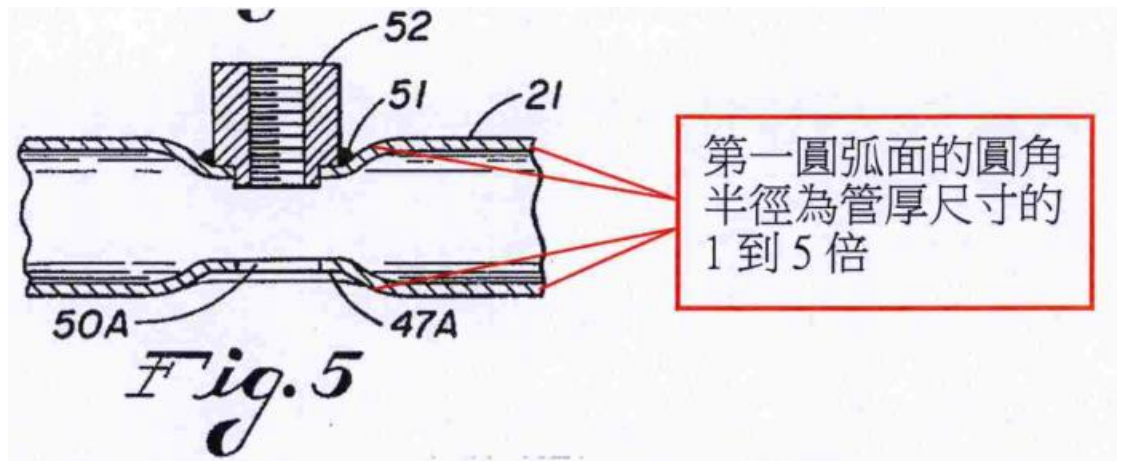


圖 6 是較佳實施例的應力集中區域示意圖

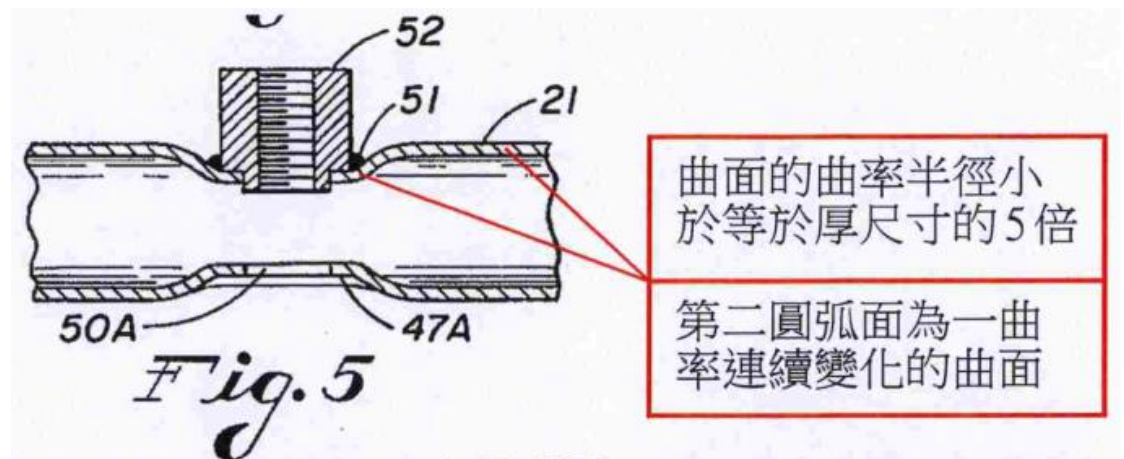
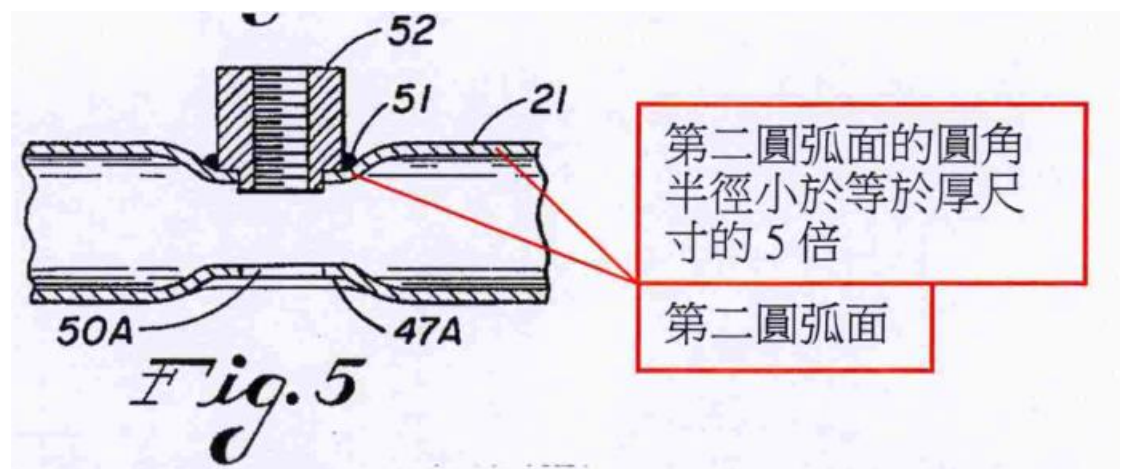
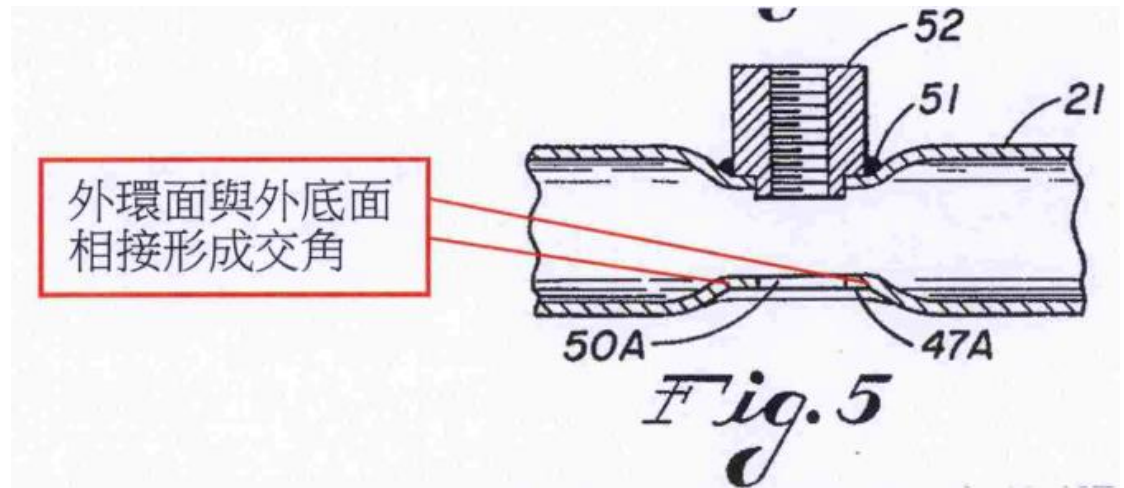


附圖二：

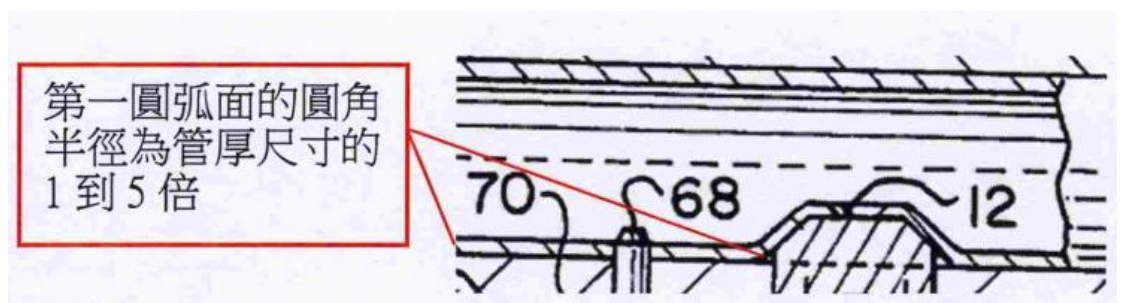
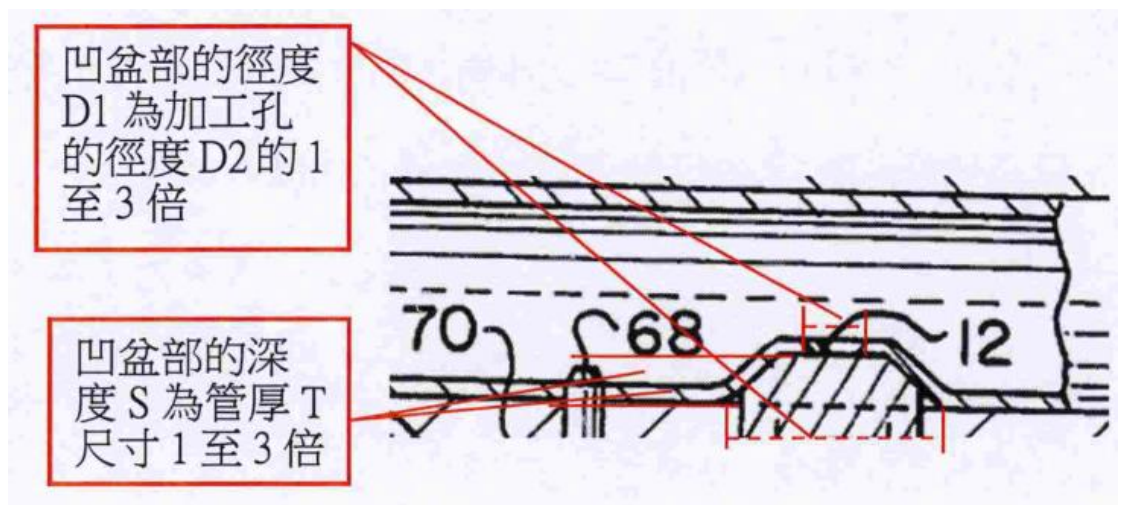
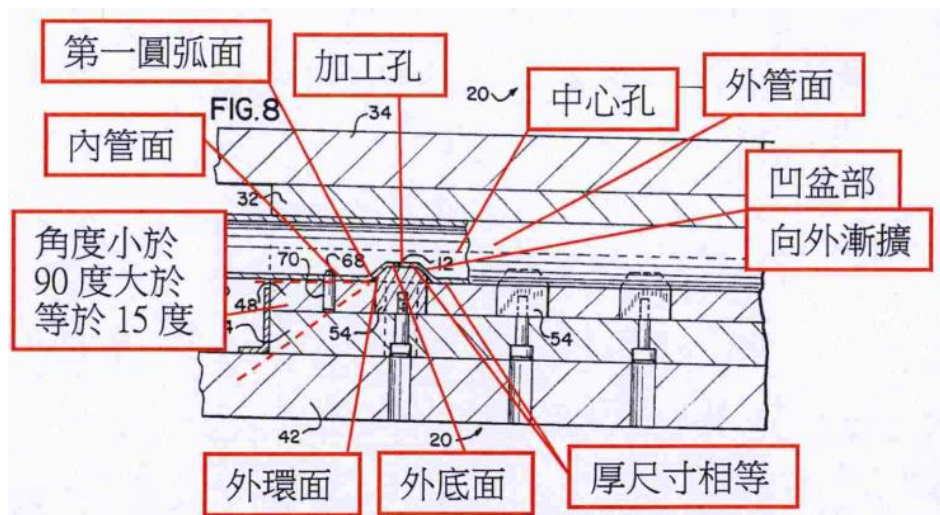








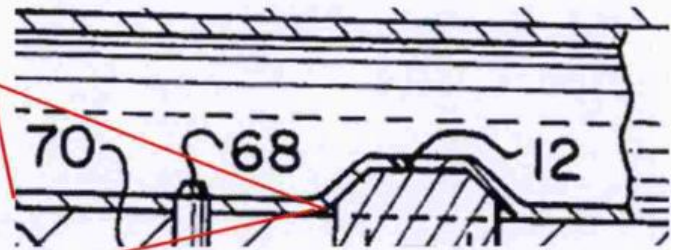
附圖三:



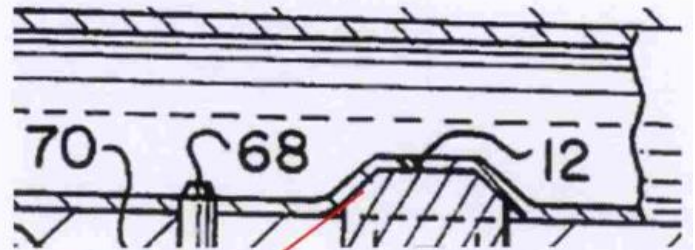


曲面的曲率半徑為  
管厚尺寸的1到5倍

第一圓弧面為一曲  
率連續變化的曲面



夾角角度範圍為  
30度至75度



外環面與外底面  
相接形成交角

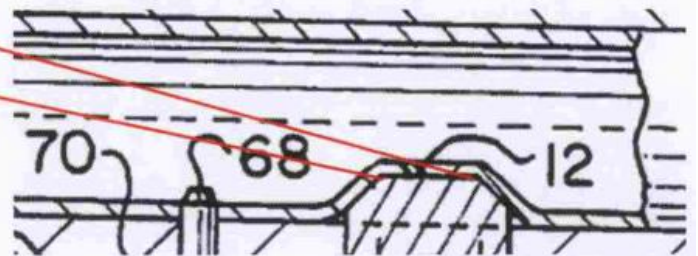


FIG.9

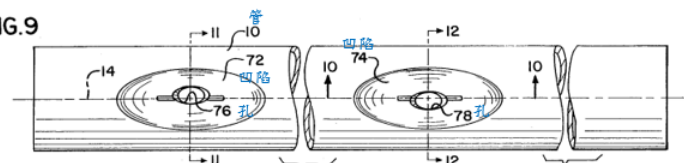


FIG.10

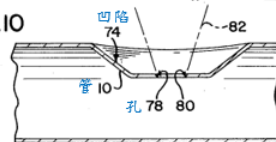


FIG.11

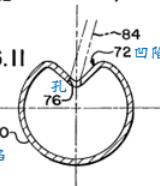
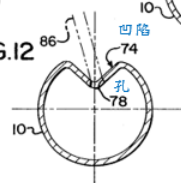
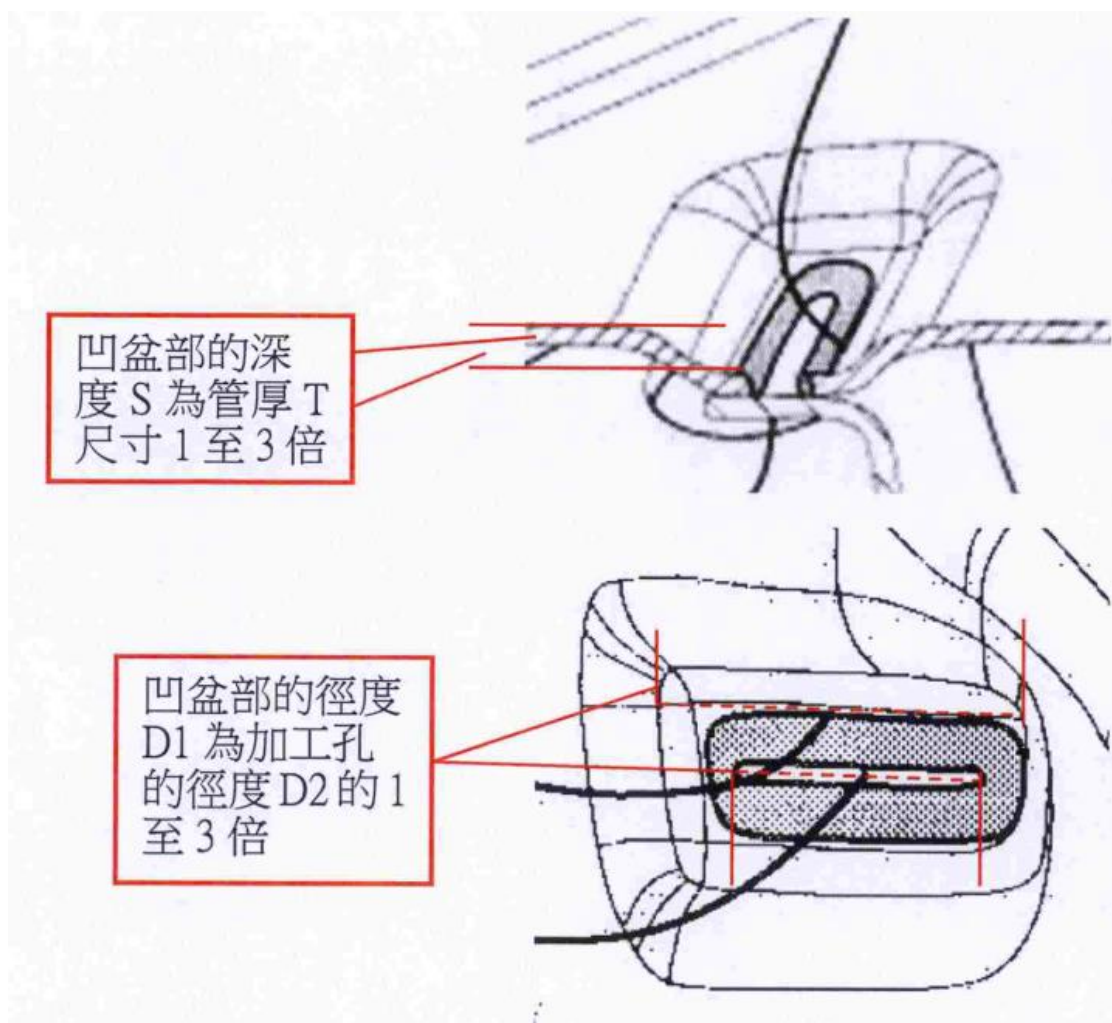
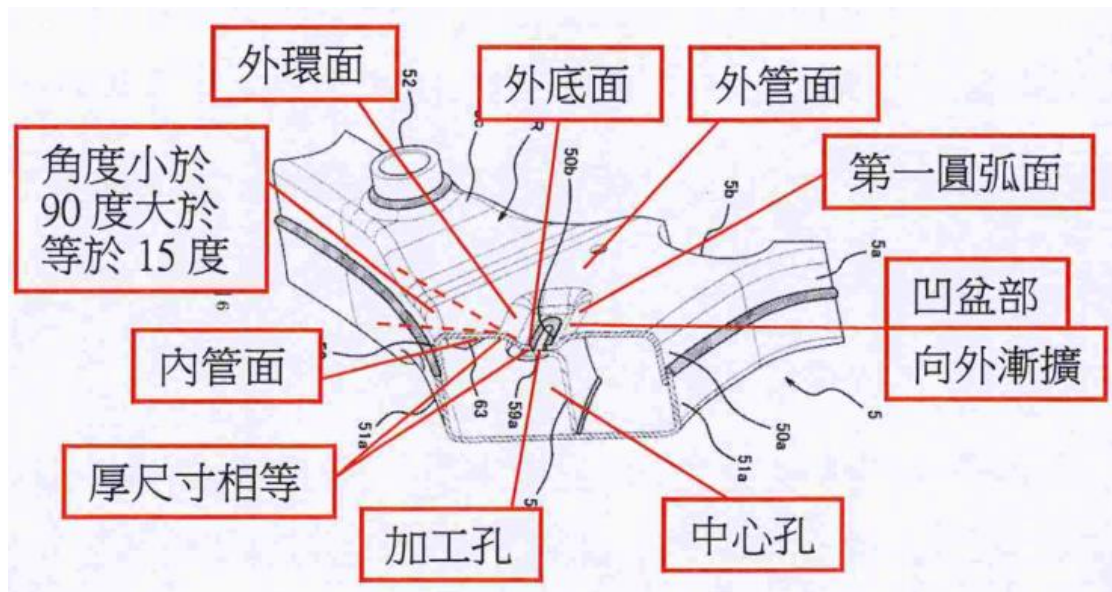


FIG.12

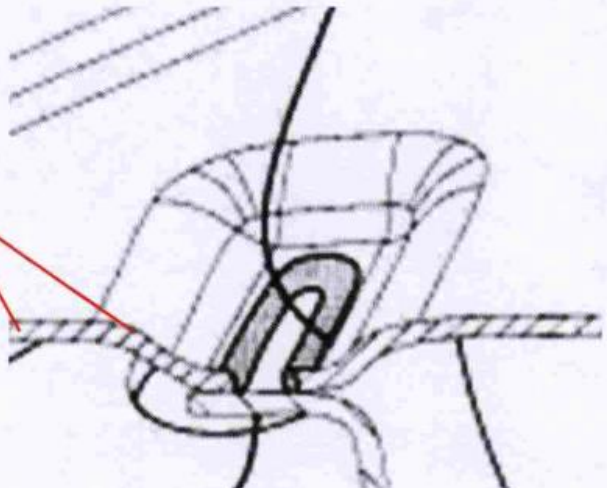




附圖四：

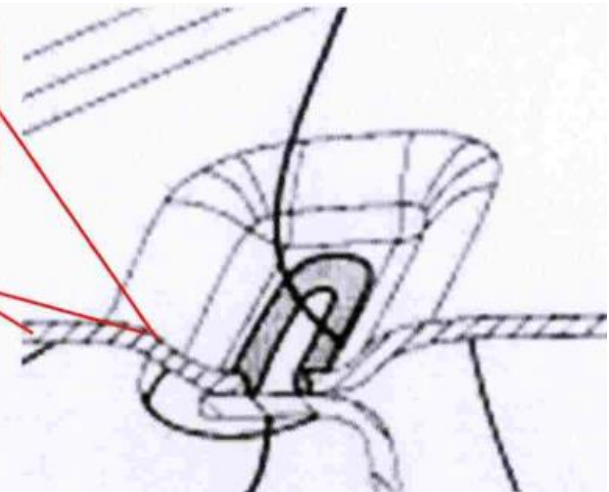


第一圓弧面的圓角  
半徑為管厚尺寸的  
1 到 5 倍



第一圓弧面為一曲  
率連續變化的曲面

曲面的曲率半徑為  
管厚尺寸的 1 到 5 倍



夾角角度範圍為  
30 度至 75 度

